



## Donation Request for Native Plants, Herbs, Flowers, Succulents and Trees:

University Of California Southern California Research and Education Center ([SCREC](#))

California Master Beekeeper Program ([CAMBP](#)): "Orange County Bee Team" Apiary 2024

Dear Supporter,

The OC Bee Team at the SCREC in Irvine, is an affiliate of the the CAMBP, focusing on science-based beekeeping, honey bee health, and pollinator stewardship. Our mission includes educational outreach, offering field trips to students and various groups, covering topics such as the history of beekeeping, bee anatomy, honey production, sustainable hive practices, and pollinator stewardship. Led by Karine Pouliquen, our team of 16 beekeepers manages twelve beehives with a primary focus on science-based beekeeping, honey bee health, and pollinator stewardship in our local community.

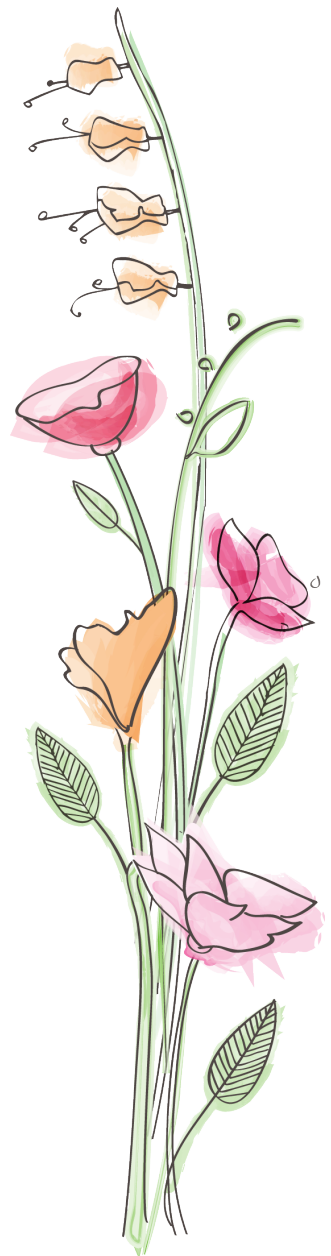
As a continuous train-the-trainer organization, we rely on dedicated volunteers to disseminate science-based beekeeping information throughout our network, which includes schools, community groups, clubs, local beekeeping associations, and county agricultural commissioners. We proudly offer our local beekeeping community scientific benchmarks and guidelines for hive management. We provide educational field trips to students, community groups, clubs, and organizations covering topics such as beekeeping history, bee anatomy, honey production, sustainable hive practices, and pollinator stewardship.

Our goal is to enhance the SCREC apiary by incorporating pollinator friendly native plants, herbs, flowers, succulents, and trees to support honey bee nutrition and improve the visitor experience. We are seeking donations that have not been treated with neonicotinoids if possible.

Your support is crucial in improving the apiary and benefiting pollinators, beekeepers, and the community. Whether you can donate one or multiple plants, your contribution is greatly appreciated. For pickups, please contact Steven Borden at 714-914-4684, or drop off your donation(s) at SCREC located at 7601 Irvine Blvd, Irvine, CA 92618 (949) 653-1810 C/O CAMBP

Thank you for your generosity and commitment to the health and well-being of our bees and pollinators.

Sincerely,





PLANT LIST			
Common Name	Botanical Name	Size	Season
Perimeter Fencing - Hedges	Rosemarinus officinalis	5-gallon	Srp/Smr/Aut
Tuscan Rosemary	Callistemon citrinus "Little John"	5-gallon	Year Round
Dwarf Little John Bottlebursh	salvia clevelandi	5-gallon	Sp/Smr/Aut
Winnifred Gilman Sage	Epilobium canum	5-gallon	Late Smr-Fall
California Fuschia			
<b>Tree</b>			
Desert Museum Palo Verde	Parkinsonia x Desert Museum	15-gallon	Year round
<b>Lavender Garden</b>			
French, Spanish, Sweet,	Lavendula -mixed	1-gallon	Summer-Fall
Goodwin, Gros Bleu	intermedia & stoechas		Winter-Spring
<b>Sunflower Garden (option of seed)*</b>			
Lemon Queen	Helianthus annuus	1-gallon	Smr-Fall
Helianthus	Helianthus annuus	1-gallon	SP/Smr/Aut/Fall
<b>Bee Hive Ground Flowers (option of seed)*</b>			
Pacific Aster	Symphotrichum chilense	4"	Smr-Fall
California Poppy	Eschsholzia californica	4"	Winter/spring
Scabiosa - Black Knight, Violet and Butterfly Blue	Scabiosa colombaria	1-gallon	Spring-Summer
Scented Geranium	Pelargonium	1-gallon	year round
Trailing Lantana	montevidensis	1-gallon	Spr/Smr/Aut
Verbena	Verbena bonariensis	1-gallon	Spr?Smr/Fall
Yarrow	Achillea millefolium "Calistoga"	1-gallon	Spring/Smr
<b>Flowers Gardens - Annuals/Perennials (option of seed)*</b>			
Bee Balm	Monarda	1-gallon	Smr-Fall
Coneflower	Echinacea "Magnus"	4"	Smr-Fall
Cornflower	Centaura cyanus	4"	Spring
Cosmos	Cosmos bipinnatus	4"	Summer
Crocus	Crocoideae	Bulbs	Aut/Winter/Spring
California Goldenrod	Solidago californica	1-gallon	Fasll
Matilija Poppy	Romneya coulteri	1-gallon	Spring/Summer
Marigold	Tagetes	4"	
<b>Herb Garden (Raised Bed)**</b>			
Basil -African Black	Ocimum basilicum	4"	Srp/Smr/Fall
Borage	Borago officinalis	4"	Winter-Spring
Trudy Catmint	Nepeta	4"	Spg/Smr/Fall
Fennel	Foeniculum vulgare	4"	Spring/Summer
Bee Balm	Monarda	4"	Summer
Oregano	Origanum laevigatum	4"	Summer-Fall
Rosemary - Herb	Rosemarinus officinalis	4"	Summer-Fall
Spearmint	Mentha	4"	Summer-Fall
Thyme	Thymus vulgaris	4"	Summer-Fall
<b>Sage Garden</b>			
Autumn, Germander,	Savia Leucantha & microphylla	5 gal	Winter-Spring
Mystic Spire			Sprg/Smr/Fall
<b>Succulent Garden (Raised)</b>			
Aeonium Simsii		1 Gal	Spg/Smr
Crassula Folcate		1 Gal	
Delosperma Nubigenum		1 Gal	
Mesembryanthemus		1 Gal	
Sedum Rupestre		1 Gal	

